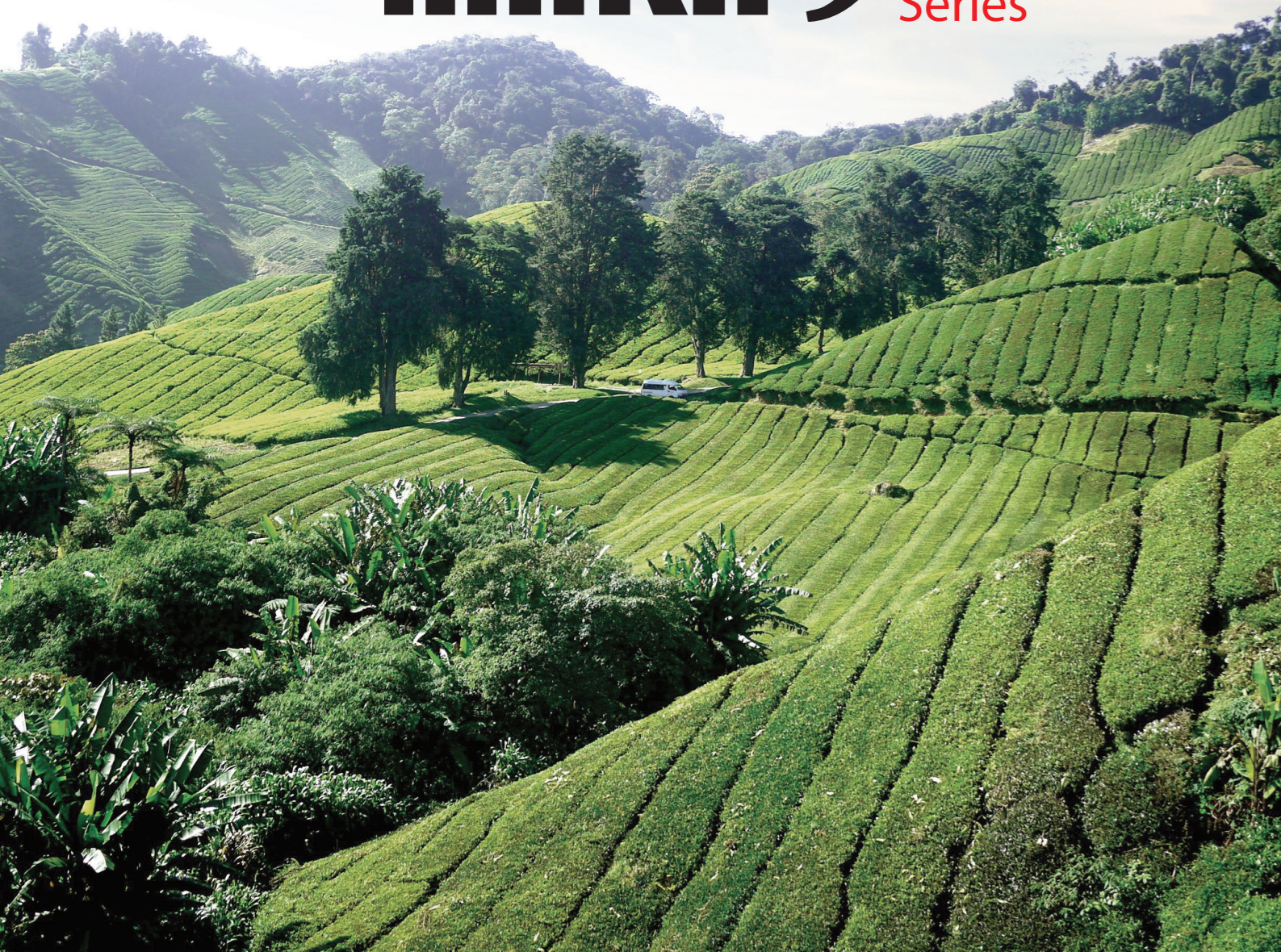


More Various! More Precise! More Speedy!  
Thinking Company

Tea Color Sorter  
**MAKA 9** Series



Tea Color Sorter  
**MAKA 9** Series

3 Stage



Tea Color Sorter  
**MAKA 9** Series



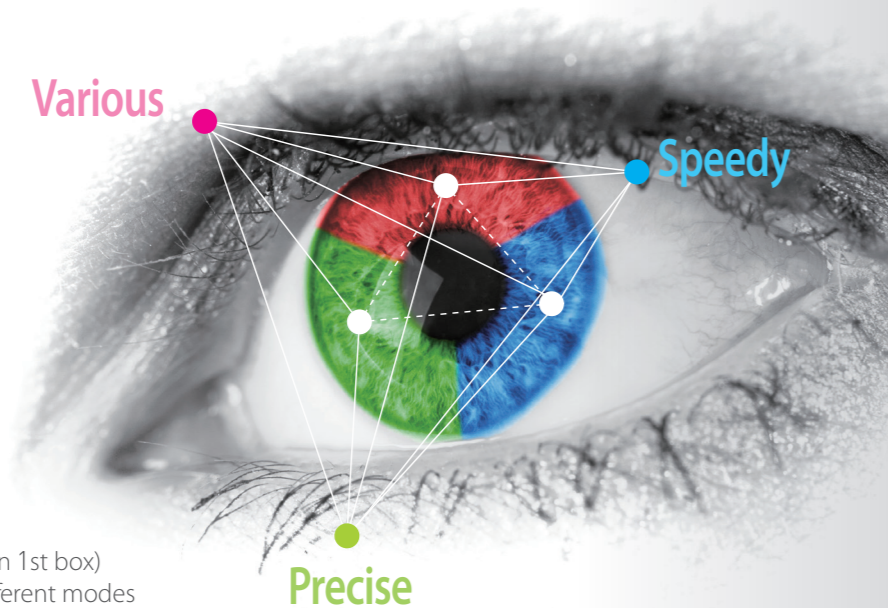
**Timing**

Timing Co., Ltd.

47, Dalgubeol-daero 232-gil, Dalseo-gu, Daegu, R. O. Korea.  
Tel : +82-53-584-4588 Fax : +82-53-584-4587  
E-mail : timingk@hanmail.net www.timingkorea.com

**Timing**

(주) 타이밍



# Smart Tea Color Sorter **MAKA 9** Series

It is best sorting technology color sorters which installed self-development LEDs and high performance ejectors. It is designed user friendly to use and maintenance on the basis of our know-how about color sorters.

Sorting bad material and Size simultaneously at once

## Technical Features

### Smart Sorting Mode

- Color mode (Golden & Silver Tippy retains in 1st box)
- Upper(Tippy) & Lower(Cleaning) stages different modes
- Normal reverse & Reverse tippy modes
- Various grading modes (Image detecting program)
- Cleaning modes

### Innovative Full Color Line Scan Camera

- Smart performance FPGA & DSP algorithm
- RGB color CCD (each 5120 pixels)
- 0.05mm detect recognitions
- RGB line position matching technology
- Triple image processing & Sorting mode

### Windows CE Embedded System

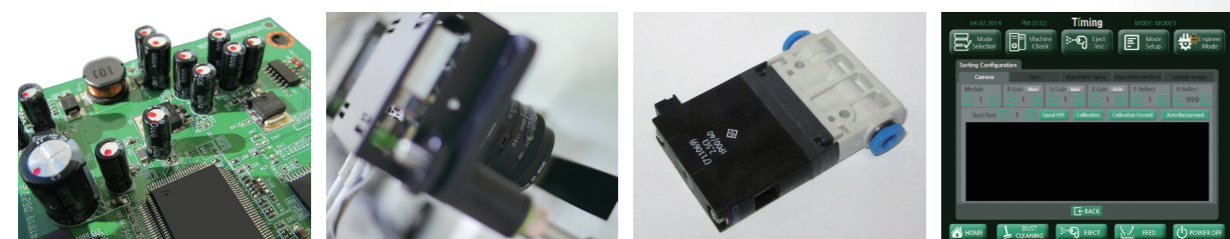
- 12.1 inch TFT LCD(1024 x 768) & Touch
- Real time image capturing & Display function
- Tracking image of bad materials and Reject them

### Save up to 50% energy

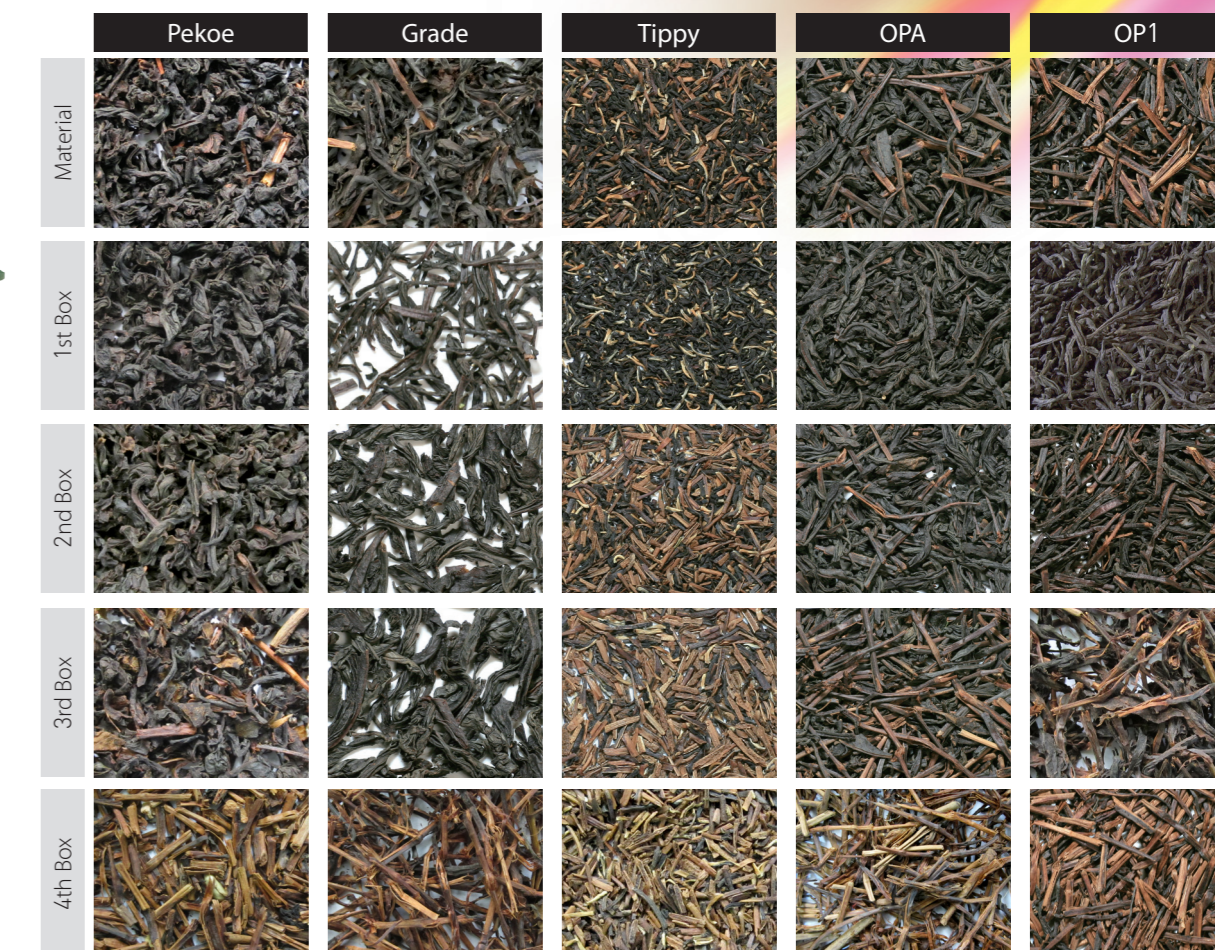
- Air consumptions down to 50% efficiency
- Electric consumptions down to 50% efficiency

### High Performance Ejectors

- Fast\_Switching 1000hz (Germany Festo)
- Enhanced ejector life time up to 5 billion times
- Minimize good product in rejection



## Sorting Sample



## Specifications

Model NO	Dimensions (W x L x H)	Input to M/C (kg / Hour)	Power (kw)	Compressor Power (H/P)	Channel	Camera
MAKA 9018	4,700 x 2,020 x 3,760(cm)	300 ~ 1,500	6	30	1152	18
MAKA 9015	4,400 x 2,020 x 3,760(cm)	250 ~ 1,250	5	20	960	15
MAKA 9012	4,100 x 2,020 x 3,760(cm)	200 ~ 1,000	4	15	768	12

\*The specifications and designs can be change without any notice. The capacity, power, air volume depend on the sorting method and material condition.

## Installation Drawing

